

SPECIAL NEWSLETTER

PRESIDENT'S MESSAGE

Dear Yomitan members: It is with heavy heart that I must tender my resignation as your Yomitan Board President. Recently, I had a very close relative pass away, on top of several other personal events that occurred. These recent events have caused me to re-evaluate my time and I will need to re-focus my energy on family matters, here and on the mainland.

It was a pleasure and honor serving as your Board President. We have made great strides this year and have plans to continue, in years to come. Our Club is in good hands as Vice President Mel Horimoto has volunteered to take over the helm as your President for the rest of my term. However, this leaves a vacancy in his position as Vice President. If there is anyone who would like to step forward to volunteer for this role, over the next year, it would be greatly appreciated. Next year will mark Yomitan Club's 90th Anniversary in Hawaii. Please give your support to our great board (with 6 other members), serving to shape our Yomitan future.

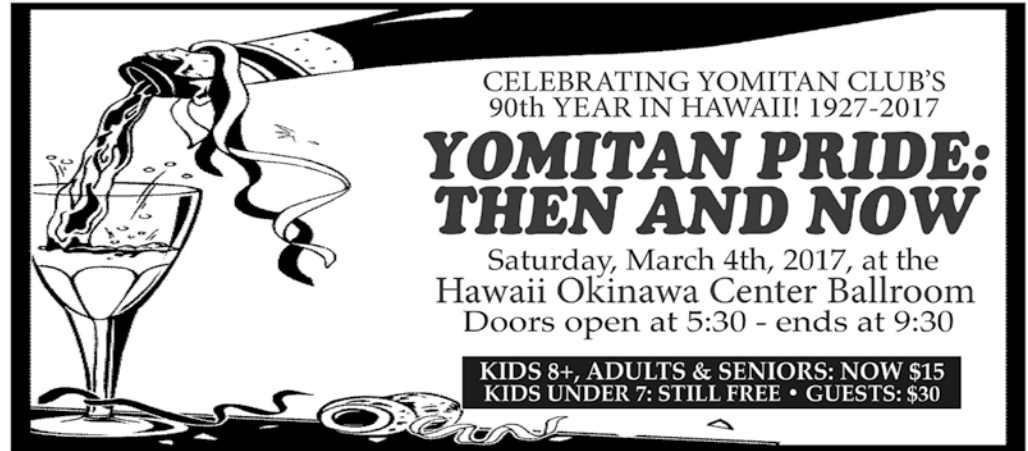
IPPE NIFEI DEEBIRU &
DANJU KARIYUSHI!

Gwen Fujie

UPCOMING SHINNEN-ENKAI

Haisai fellow Yomitan Club members!

Wishing you all a happy holiday season. As shown on this page, our



next Shinnen Enkai will be held on **SATURDAY, MARCH 4, 2017**, celebrating our 90th Anniversary! What a profound accomplishment! But, because of the Taikai trip, we are slightly behind in organizing this year's event, so we will need all hands to help out; in order to present an honorable celebration.

For this auspicious occasion, we are calling on the identified Shinnen Enkai group of **Benigno - Higa**, as well as the previous Festival group of **Uechi - Azama** to assist in the coordination. We also welcome anybody else who wishes to assist. We will be having a meeting on Wednesday, December 14th, at 5:30 PM; at Moanalua 99, which is at the end of Paa Street in Mapunapuna. Please make every effort in your busy schedules to join us.

We are looking for an overall Chairperson along with coordinators for each of the sub-sections, namely: Entertainment, Food, Pupus, Door Prizes/Raffle, Registration, Leis/Gifts, Children's Games, Decorations, Audio/Visual, and Emcee. [Reception/greeters are usually the Pres. & Past Pres.] Many of our board members, past

and present, will be on hand to help you in your coordinator duties. We are also requesting all Yomitan Club members and families who either dance, sing, play instruments or other talents to participate and be a part of our Entertainment. Would it not be grand for our 90th Anniversary Celebration to have ALL Yomitan performers?! We have word that the Honorable Mayor Denjitsu Ishimine of Yomitan Village is clearing his calendar to make the trip to our 90th celebration. Let's showcase the wonderful talents of Yomitan members!

Due to the unfortunate cancellation of the Okinawan Festival and the scrip refund/return; our Club lost out on our 30% allocation of funds to assist in this year's club activities; which our share would have been \$1,800. Due to this, as well as the rising cost of food, it has become necessary to raise the cost of the dinner to \$15 per person; for ages 8 - adult; (children 7 and below will continue to be free). This is still less than 1/2 of the cost per person. Page 3 is the RSVP/announcement.

While we do get some donations from our club members, we would

like to make a special appeal for monetary or product donations to help defray the costs so we can make this 90th Anniversary event SPECTACULAR! Please contact our Treasurer or any one of the fine Board members. Any donation of \$250 or over, will be given a donation letter for tax purposes, as Yomitan Club is an approved Group member club, under HUOA's 501c3 tax exemption. Thank you very much for your continued support and cooperation.

OUR GENEALOGY PROJECT

Linda Takushi has been busy in recent weeks, contacting Yomitan Club families for additions and corrections, in order to update the Yomitan Club's genealogy book on the occasion of our 90th Anniversary Celebration! She has accomplished much in a herculean effort, but still needs your help to fill the many remaining holes in her compilation of family connections. She has been able to make some sense of many forgotten ties, but still needs your input to trace some

of our long-lost member families. If your parents or grandparents have vital information but can't attend, please consider having a family representative attend either the 2017 Shinnen-Enkai, or any of the planning meetings leading up to the event, and please bring along any family or club function photos. If that's not possible, please feel free to contact Linda and arrange a way to pass along your family information. When Linda's work is reasonably accurate and complete, the book will be reprinted and be made available for sale, to all Yomitan Club members!

We will also be producing a large-scale working chart, gleaned from family genealogy pages, that were part of the original book. They identify all Issei that emigrated from Yomitan Village and their Hawaii families. It will be displayed at our Shinnen-Enkai, as a visual aid and as a work-in-progress for you; to help us update the genealogy project. This will definitely be a significant achievement and a highlight of our

Yomitan Club's 90th Anniversary!

CONTACT YOUR OFFICERS

Mel Horimoto - Interim President (mshorimoto@hawaiiantel.net) text: 753-3100 HUOA REP.

Roxanne Yoshida - Treasurer (rbyoshida123@aol.com) cell: 782-5050 ACCOUNTING

Jennifer Goon - Asst. Treasurer (fernguyen@yahoo.com) cell: 391-2350 MEMBERSHIP

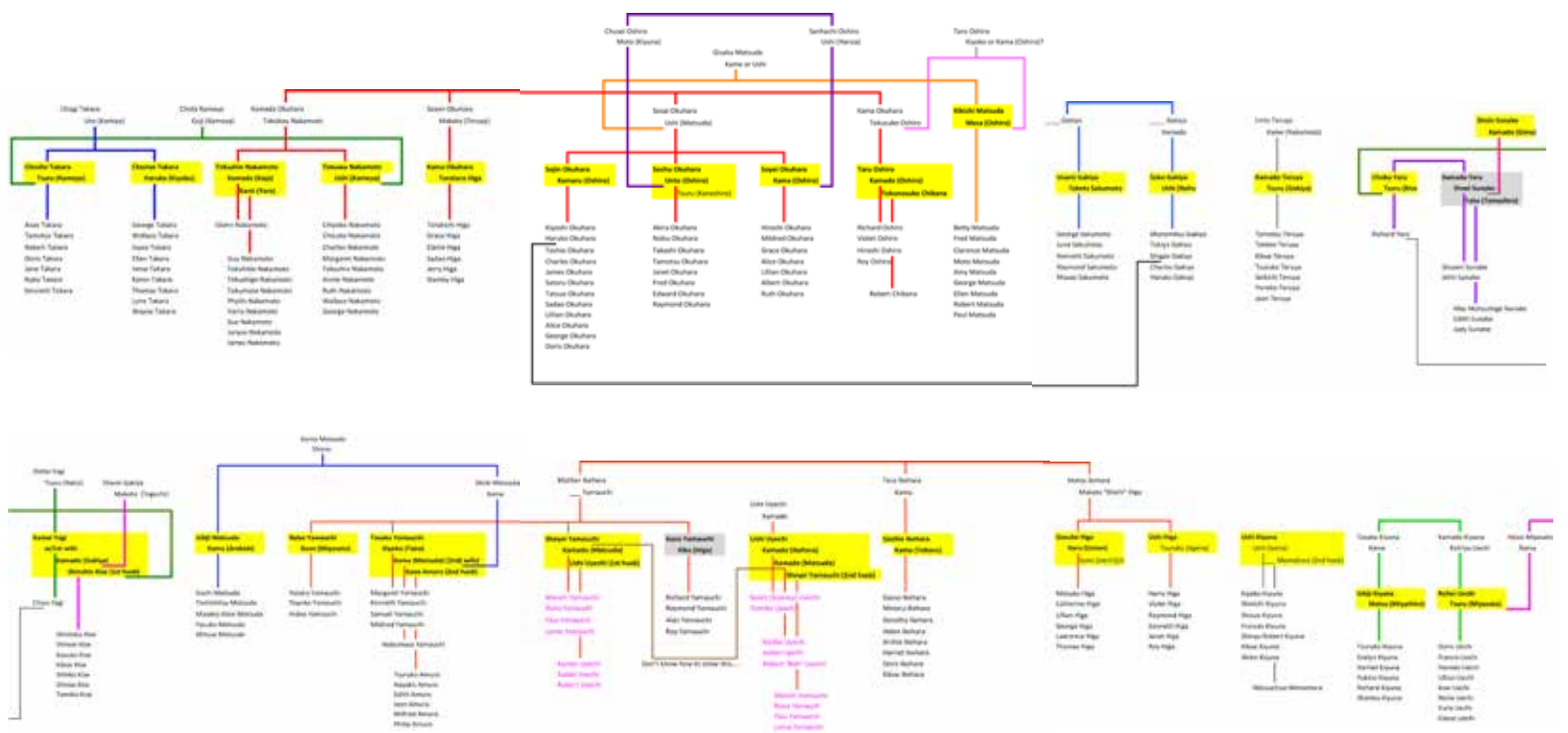
Laura Ajimine - Recording Sec. (ajimine001@hawaii.rr.com) cell: 542-1791 BOARD MINUTES

Shirley Kaneshiro - Asst. Rec. Sec. (smhkaneshiro@gmail.com) home: 833-4337 GENEALOGY

Warren Furuya - Corres. Sec. (adsigns555@me.com) cell: 228-3664 NEWSLETTER

Linda Takushi -Asst. Corres. Sec. (yomi@hawaii.rr.com) home: 486-0207 GENEALOGY

THIS IS A SNEAK PEEK AT THE GENEALOGICAL CHART THAT LINDA TAKUSHI HAS BEEN UPDATING SO DILIGENTLY. WE WILL HAVE A LARGE SCALE VERSION FOR MEMBERS TO EXAMINE OR ADD ONTO, ON DISPLAY AT THE YOMITAN SHINNEN-ENKAI ON SATURDAY, MARCH 4, 2017.





CELEBRATING YOMITAN CLUB'S
90th YEAR IN HAWAII! 1927-2017

YOMITAN PRIDE: THEN AND NOW

Saturday, March 4th, 2017, at the
Hawaii Okinawa Center Ballroom
Doors open at 5:30 - ends at 9:30

KIDS 8+, ADULTS & SENIORS: NOW \$15
KIDS UNDER 7: STILL FREE • GUESTS: \$30

If you are contributing to the Pupu Table, please identify yourself and your dish to our host and the crew, so that they may label them properly. Please mark or label any personal utensils or dishes and claim them before you leave.



MEMBER DINNER PRICE HAS INCREASED! If combining payments, please itemize your DUES, DONATION & DINNERS Include family head count and kids' ages below. MAIL YOUR RSVP WITH CHECK PAYMENTS, BY SATURDAY, FEB. 4TH.

**Did you move? Is your mailing label wrong?
PLEASE HELP US UPDATE OUR RECORDS!**

NAME _____

NEW Address _____

NEW Phone _____

E-mail _____

If you have questions about dues owed
or any unresolved issues, please contact
Treasurer Roxanne Yoshida @ 782-5050

Make checks payable to: YOMITAN CLUB

Mail this form to:

JENNIFER GOON
1316 PIIKOI ST.
HONOLULU, HI 96814

DUES CURRENTLY OWED: _____

*FYI: Families' yearly dues are \$30;
Individuals' yearly dues are \$15.
Seniors 65+ don't pay any dues, but pay
for dinner. Yomitani pays for kids under 8.
For games, please give ages & headcount.*

HEADCOUNT AND COST OF DINNERS

Members:

Age 0-2 # ___ @ \$0.00 _____

3-7 # ___ @ \$0.00 _____

MEMBER DINNER PRICE HAS INCREASED!

8 - Adult: # ___ @ \$15.00= _____

Guests: # ___ @ \$30.00= _____

DONATION: _____

PAYMENT AMOUNT _____

**JENNIFER GOON
1316 PIIKOI ST.
HONOLULU, HI 96**



Mail this form to:

**JENNIFER GOON
1316 PIIKOI ST.
HONOLULU, HI 96814**

Mail this form to:

**JENNIFER GOON
1316 PIIKOI ST.
HONOLULU, HI 96814**